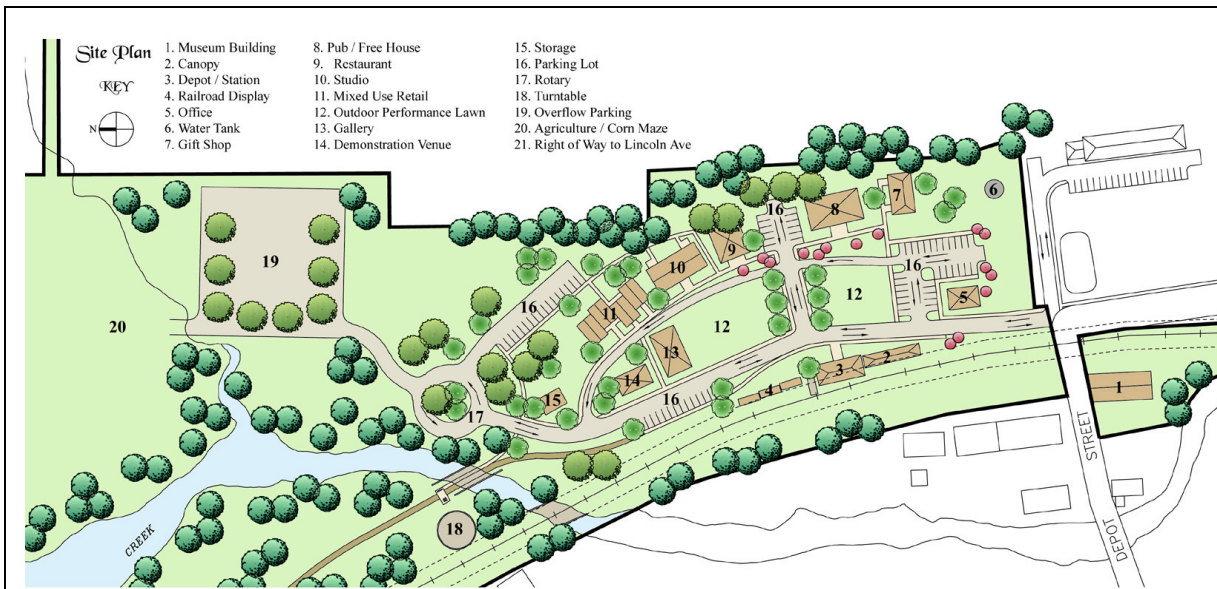




# Ty Gwaith Crefft



- **Gallery / Gift Shop** - A single story structure (2,000 SF) will accommodate display areas for Welsh artisans who are not present on site & demonstration space for short term visiting artisans from Wales. The gift shop will offer items imported from Wales by Remsen Development Corporation.
- **Studio Buildings** - Mixed-use structures (4,000 to 6,000 SF) each. The upper floor will be residential & ground floor will be retail or studio space. The buildings will be occupied by Welsh & American artisans who here doing residencies & overseeing apprenticeship programs. Retail will focus on products from the Remsen area, rural partners in the US, and producers in Wales.
- **Interpretation Center** - Area for genealogy, folklore & history that works in partnership with the St. Fagan's National History Museum, Wales and Capel Cerrig, Remsen. It will highlight the use of technology to collect data about Welsh descendants in the US & promote Welsh language & culture.
- **Restaurant / Pub** - A 'Free House' focusing on Welsh & Celtic traditions. The brewery and a field used for growing hops will be used to explain the culture and craft of ale making in the Welsh tradition.

**More than two hundred years** after the first Welsh immigrants settled here, Remsen is embracing and celebrating its unique heritage by applying it to a community development project.

**This economic regeneration** program will build social, cultural and economic linkages to Wales and the Welsh community in North America by establishing and maintaining a handmade economy that features Welsh artists, local artisans, small scale fabricators, and Welsh culture.

**This new community enterprise** will be built with the development pattern and land use character of a railroad oriented, mixed-use upstate New York community in the early 1900's. It will celebrate the period when Welsh immigration to this country was at its peak. Ty Gwaith Crefft will reestablish an authentic Welsh presence in Remsen by connecting younger citizens and emerging local artisans with Welsh creative enterprises as apprentices and partners.

**The Depot** which will be used for performance and interpretative space, underscoring the railroad's importance in the early settlement of the village by Welsh immigrants. The reconstructed Depot is already built and is in use for these purposes. The real estate for Ty Gwaith Crefft as well as some of its businesses will be developed, owned, and managed by the Remsen Development Corporation. Other businesses that occupy spaces in the development will be individually owned.

**The Remsen Development Corporation** will work with Welsh and American partners to support the operation of the development and all of its businesses. This project is not proposing to create a philanthropically supported museum or cultural center...instead it is proposing to create a self sustaining community owned enterprise that will develop real estate, import and export products, conduct cultural events, folklore and genealogical research, host performances and create heritage based economic opportunity.

**Ty Gwaith Crefft** will not only grow Welsh heritage-based business in Remsen but it will reinforce and celebrate Welsh heritage in the community. It will accomplish this by hosting a North American Welsh Cultural, Immigration and Genealogy Center, which will serve as an educational facility and resource to encourage heritage tourism and further Welsh business and networking.

For more information visit [www.remsendepot.com/tg\\_description.html](http://www.remsendepot.com/tg_description.html)